

EFCL Friends and Neighbours Memberships

The EFCL is now offering memberships in our federation to other registered non- or not-for-profit organizations, and licensed businesses. The aim of what we're calling the **Friends and Neighbours** membership option is to welcome, include and support all groups that work to build community.

Are you a business looking to reach potential new customers? A faith community looking to broaden your outreach? A cultural organization looking to better integrate with the broader community? A sports organization looking to expand your reach?

The **Friends and Neighbours** membership with EFCL can help with this.

Membership types

Friend of EFCL	Available to any registered non- or not-for-profit organization
Sports Friend of EFCL	Available to any registered sports organization looking to connect with Leagues in their community
Neighbour of EFCL	Available to licensed corporations or owner-managed enterprises, who wish to support the Community League movement, and advertise that support

Become a Friend of EFCL

Grow your reach and become more effective by linking with our city-wide audience and experts.

Perks

- ✓ Access to all EFCL workshops and events (50 per year)
- ✓ Membership decal for your organization's premises
- ✓ Five hours of support a year from our team of experts
- ✓ Recognition as a Friend of the EFCL on our website – with a direct link to your website

Our experts

Municipal governance
Sustainability
Planning and development
Membership and volunteerism
Recreation

Our reach

170,000 direct program participants
7.5 per cent of all Edmonton households are League members

Annual fees

\$100 <small>*Promo</small>	\$200	\$300	\$500
Less than \$50,000	Between \$50,000- \$150,000	Between \$150,000-\$499,000	Above \$500,000

Sliding scale based on a total annual budget.

Become a Sports Friend of EFCL

Grow your reach and become more effective by linking with our city-wide audience and experts.

Perks

- ✓ Access to all EFCL workshops and events (50 per year)
- ✓ Membership decal for your organization's premises
- ✓ Five hours of support a year from our team of experts
- ✓ Recognition as a Friend of the EFCL on our website – with a direct link to your website

Our experts

Municipal governance
Sustainability
Planning and development
Membership and volunteerism
Recreation

Our reach

170,000 direct program participants
7.5 per cent of all Edmonton households are League members

Annual fees

\$100

Per membership year.
Membership will not carry voting privileges at General Meetings.

Become a Neighbour of EFCL

Grow your reach and become more effective by linking with our city-wide audience and experts.

Perks

- Access to all EFCL workshops and events (50 per year)
- Membership decal for your organization's premises
- Five hours of support a year from our team of experts
- Recognition as a Friend of the EFCL on our website – with a direct link to your website

Our experts

Municipal governance
Sustainability
Planning and development
Membership and volunteerism
Recreation

Our reach

170,000 direct program participants
7.5 per cent of all Edmonton households are League members

Annual fees

\$500

Per membership year.
Membership will not carry voting privileges at General Meetings.

What's a Community League?

A Community League is a not-for-profit organization led by a board composed of volunteers from the neighbourhood.

They're unique to Edmonton

Leagues are similar to community centres and neighbourhood associations, but over their **100-year history** have developed into their own unique model of local, neighbourhood-level governance.



Many Leagues build halls



They're city wide

There are 162 Community Leagues. Every neighbourhood in Edmonton has access to one.

You can look yours up:

<https://efcl.org/league-search/>

Leagues are open to anyone who lives in the neighbourhood.

What do Leagues do?

They build amenities or community assets for the neighbourhood.

They bring people together.

They create local recreation and programming.

They provide people with a platform to have their voice heard at City Hall.

What's EFCL?

The Edmonton Federation of Community Leagues is a not-for-profit organization created by Leagues in 1921. We have 16 staff members, many of them experts and thought leaders in specialized areas.

Mission and vision

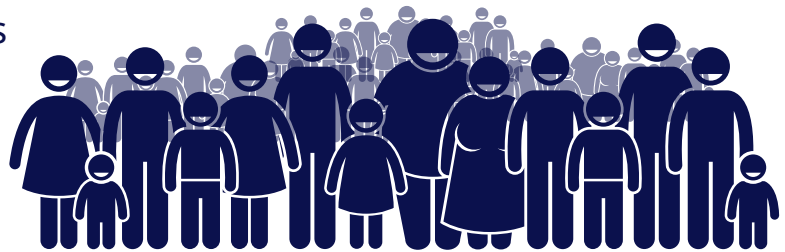
Our mission is to engage, develop and connect Edmonton's Community Leagues as they build healthy neighbourhoods.

Our vision is that vibrant Community Leagues create a vibrant city.

By connecting with the EFCL and Leagues, you can demonstrate your community commitment to an audience of dedicated city organizers.

Who makes up EFCL?

All 162 Community Leagues
(8,100 volunteers)
are members of the EFCL.



EFCL's goals

- Broaden reach and diversity
- Advocacy and engagement
- Build effective operations
- Champion Community Leagues
- Support League leadership and capacity

EFCL's audience

- Living Local newsletter: 2,400 subscribers
- Twitter: 76,000 followers
- Facebook: 4,315 followers
- Instagram: 1,600 followers
- Direct mail: 18,000 on mailing lists